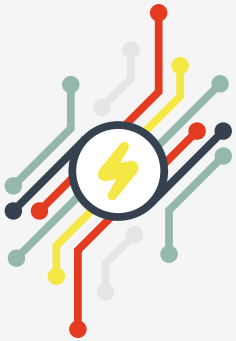


A Managed Interface Solution That Ties the Entire Package Together!

The Keena Managed Interface makes healthcare interoperability a reality, today. This SaaS (Software as a Service) handles your Qvera Interface Engine (QIE) installation, future updates and maintenance of all your healthcare related interfaces. This all-encompassing service provides practice-wide benefits such as improved clinical workflow, reduced overhead expenses, and true systems interoperability. Keena connects all your health IT systems, so you can easily share patient data inside your practice and with other healthcare organizations.



Interface Planning and Integration: Get Connected Fast

We have a proven process in place that ensures a quick and accurate implementation. Our interoperability experts consult with your HIT team to assess, plan, and implement your interfaces. The system is set-up to protect your practice from evolving standards and vendor software changes. We stay on top of all data formats and requirements, IHE profiles, and communication protocols because we take security, interoperability and data sharing seriously. In addition, we are up to date with HL7 FHIR so we can provide a bridge to the next generation of industry standards.



Connect All Systems and Pay as you Grow

The Keena Managed Interface Solution immediately reduces the complexity of managing your IT environment. How? You no longer have to worry about healthcare interface implementations. Our experts will migrate any interface required to any other internal system, allowing your team to focus on other high-value projects.

And, our "Pay as You Grow" financial model eliminates all up-front fees. Implementing a new interface simply adjusts your monthly subscription. No large upfront costs.



Updates and Support Whenever You Need It

Client satisfaction and maintaining consistent service is our top priority. We understand that there are many variables that can impact your interface engine. Our team is always here to help you in the event of an unexpected issue that needs troubleshooting and resolution. Decades of experience have enabled us to proactively address problems well before they affect your practice operations.



Custom Interface Innovation Lab

When a standard interface doesn't fit your unique requirements, you can rely on us to innovate and solve your interface challenges. Keena® offers custom interface development services for connecting EHRs, practice management software, patient portals and HIE systems. Our experience with leading EHR systems, interface innovations and technology standards provide a strategic advantage for your custom interface projects.

“ A few years ago, we made the decisions to migrate all of our interfaces from ConnectR to Qvera Interface Engine (QIE). Working closely with Keena Healthcare Technologies, we migrated most of our ConnectR interfaces in 3-months, including the addition of 2 new clinical applications. We feel like we have control of our IT strategy again! ”

John Grey, MHA/MS | IT Manager/Security Officer | Murfreesboro Medical Clinic

1500+
Interfaces created

105+
Partners and Organizations Served

250+
Networks and Platforms Connected through QIE

PLATFORMS WE HAVE INTERFACED

- Allscripts
- Cerner
- eClinicalWorks
- Epic
- GE Healthcare
- NextGen
- Meditech
- And most other leading EHR/PM systems

INTERFACE CONNECTIVITY FOR

- HIS (Hospital Information Systems)
- HIE (Health Information Exchange)
- LIS (Laboratory Information Systems)
- RIS (Radiology Information Systems)
- PM/EHR Systems
- PACS Systems
- Custom Interfaces

The Qvera Interface Engine (QIE)

When you work with Keena Healthcare Technology and Qvera, you are partnering with the experts in healthcare interoperability. The Qvera Interface Engine (QIE) delivers flexibility, simplicity, and reliable performance as the new industry standard for interface engines. QIE has an intuitive visual interface allowing for rapid development and implementation integrating with the latest healthcare cloud technology. Keena has the integration expertise and supplemental implementation and support services to efficiently deploy and migrate all existing interfaces, accurately and on time. Together, we provide the best interface solution available and the only interface engine you'll ever need!

FEATURES

- **Rapid Development**
Create interfaces in minutes
- **Visual Channel Editor**
Quickly map data flow using wire-frame, drag-and-drop visual editor
- **Zone Management**
Group and manage channels by zone
- **Cloud Optimized**
Full support for Enterprise Scalability and High Availability
- **Query Message Data**
Powerful node path syntax for identifying, navigating, and modifying message nodes and sections.
- **Customizable Themes**
QIE is even more intuitive and customizable than ever before
- **Step-By-Step Testing**
Preview proposed configurations and changes within the integrated test environment
- **Monitoring, Error Management and Alerting**

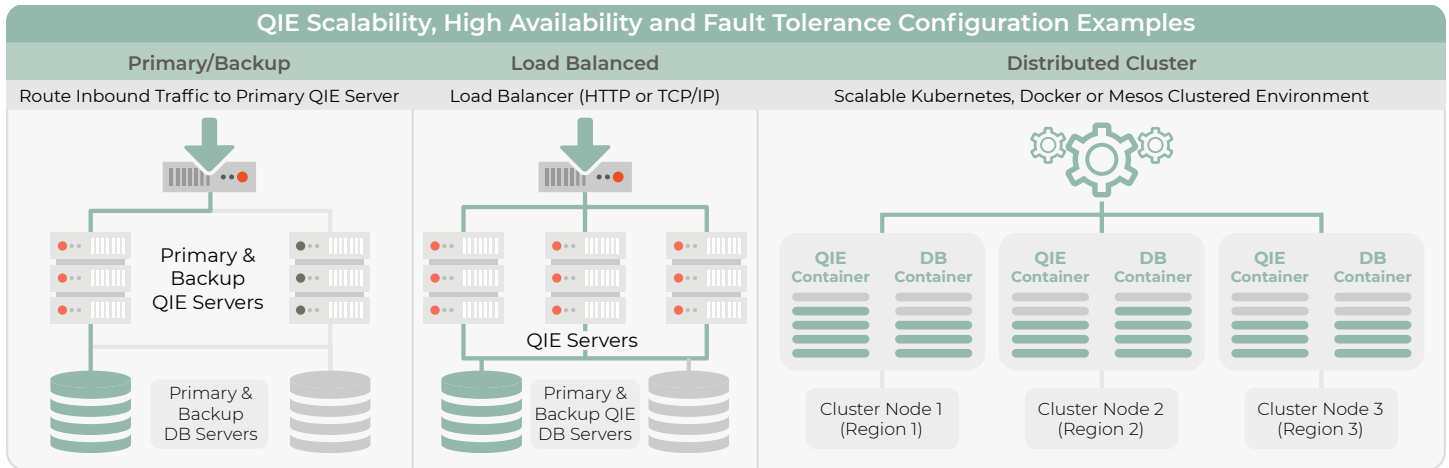
HL7 FHIR Starter Kit

With Qvera's FHIR Starter Kit you can experience QIE's all-inclusive support of HL7 FHIR for yourself to enable the following capabilities:

- Add FHIR® capabilities to your HIT systems
- Allow QIE to act as either a FHIR server or a FHIR client
- Query other FHIR servers
- Auto-convert FHIR between JSON and XML
- Convert FHIR to HL7 and vice versa
- Convert FHIR to CDA and vice versa

Infinitely Scalable, Highly Available, and Built for Today's Healthcare Cloud

The diagrams below show just a few of the scalability and high availability options that are possible with QIE.



Keena is a full-service healthcare optimization organization focused on clinical workflows, interfaces, conversions and archival solutions. Built upon a vision for improving technology delivery, Keena transforms the way people manage information, develop workflows and share knowledge within healthcare.